

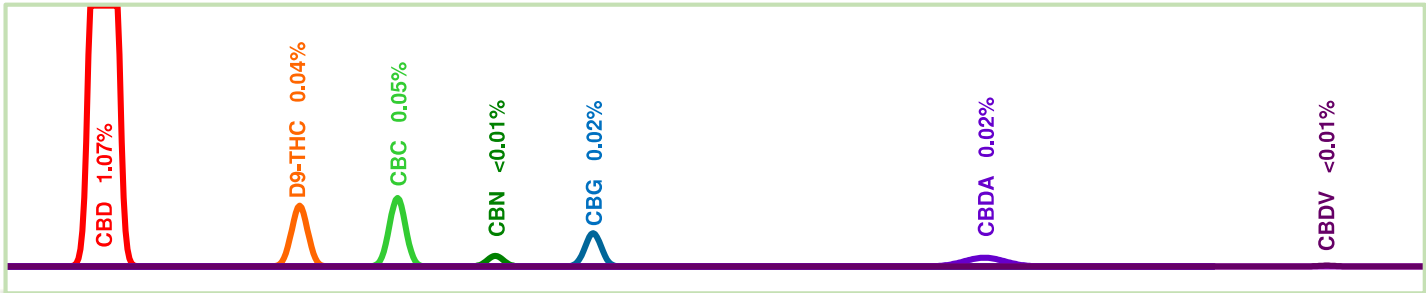
Test Certificate No.: 11528_CN
Sample: #111
Matrix: Tincture

Customer: Bill Polyniak
Kentucky Cannabis Company
bill@kentuckycannabiscompany.com
859-537-0916

Date Received: 8/25/2016
Test Date: 8/29/2016
Technician: LA/JFD

CANNABINOID PROFILE [Procedure WI-10-04]:

This test method was performed in accordance with the requirements of ISO/IEC 17025. These results relate only to the test article listed in this report. Reports may not be reproduced except in their entirety.

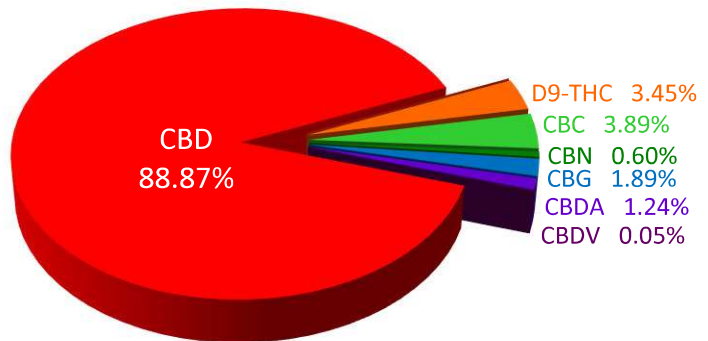


Total Cannabinoids Measured

Test	Weight %	Conc.
CBD	1.07%	10.12 mg/mL
THCV	< 0.01%	< 0.10 mg/mL
Δ9-THC	0.04%	0.39 mg/mL
CBC	0.05%	0.44 mg/mL
CBN	< 0.01%	0.07 mg/mL
CBG	0.02%	0.22 mg/mL
THCA	< 0.01%	< 0.10 mg/mL
CBDA	0.02%	0.14 mg/mL
CBGA	< 0.01%	< 0.10 mg/mL
CBDV	< 0.01%	< 0.10 mg/mL
Max THC	0.04%	0.39 mg/mL
Max CBD	1.09%	10.24 mg/mL
Total Active	1.19%	11.25 mg/mL
Total	1.21%	11.39 mg/mL

- CBD
- THC
- D9-THC
- CBC
- CBN
- CBG
- THCA
- CBDA
- CBGA
- CBDV

Distribution of Cannabinoids

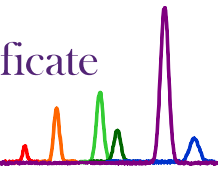


VISUAL AND MICROSCOPIC INSPECTION [Procedure WI-10-03]:

Inspection Comments: None



ProVerde Laboratories, Inc. 420 Fortune Blvd. Milford, MA 01757 617.221.3356	Christopher Hudalla, CSO	Date
		9/1/2016



Test Certificate No.: 11528-MB1

Customer: Bill Polyniak
Kentucky Cannabis Company
bill@kentuckycannabiscompany.com
859-537-0916

Date Received: 8/25/2016
Test Date: 08/25/2016
Technician: MS

Matrix: Tincture

MICROBIOLOGICAL SCREENING (MB1) [Procedure WI-10-09]:

This test method was performed in accordance with the requirements of ISO/IEC 17025. These results relate only to the test article listed in this report. Reports may not be reproduced except in their entirety.

Label	Sample Name	Total Aerobic	Total Coliform	Enterobacteria	Yeast & Mold	Status
11528	#111	<100	<100	<100	<100	All tested microbiological contaminants within recommended limits*
*Recommended Limits for Processed material		100,000	1,000	1,000	10,000	Source: American Herbal Pharmacopoeia

PATHOGENIC BACTERIA (MB2) [Procedure WI-10-10]:

Label	Sample Name	Pathogen	Date	Tech	Result	Status
11528	#111	<i>E. coli</i>	8/26/16	MS	Negative	No Pathogens Detected
11528	#111	<i>Salmonella</i>	8/26/16	MS	Negative	No Pathogens Detected

ProVerde Laboratories, Inc. 420 Fortune Blvd. Milford, MA 01757 617.221.3356	Authorization: Christopher Hudalla, CSO	Date
	Signature: <i>Christopher Hudalla</i>	8/29/2016